



 **MOTOROLA SOLUTIONS**

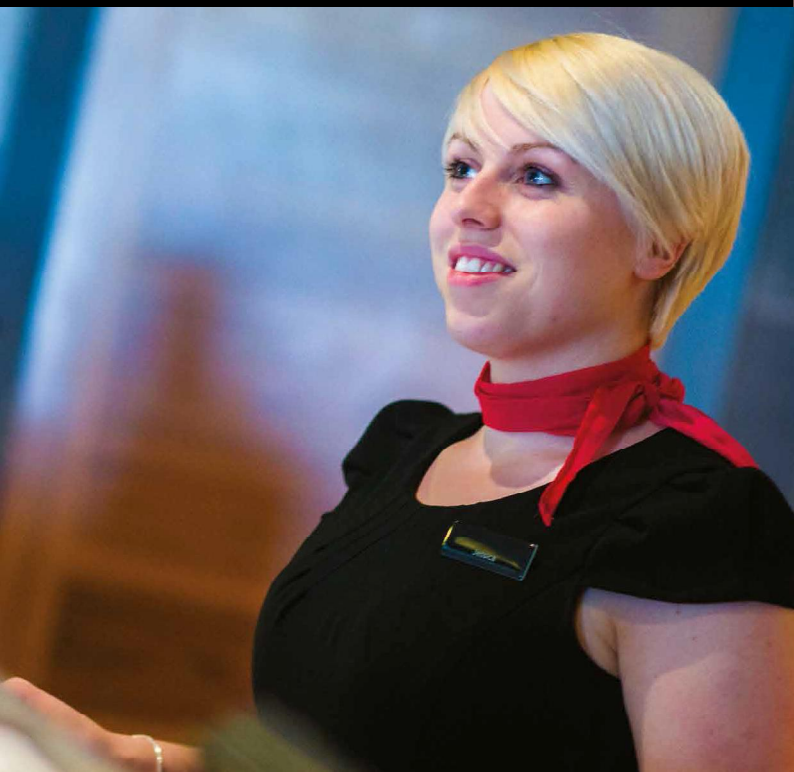
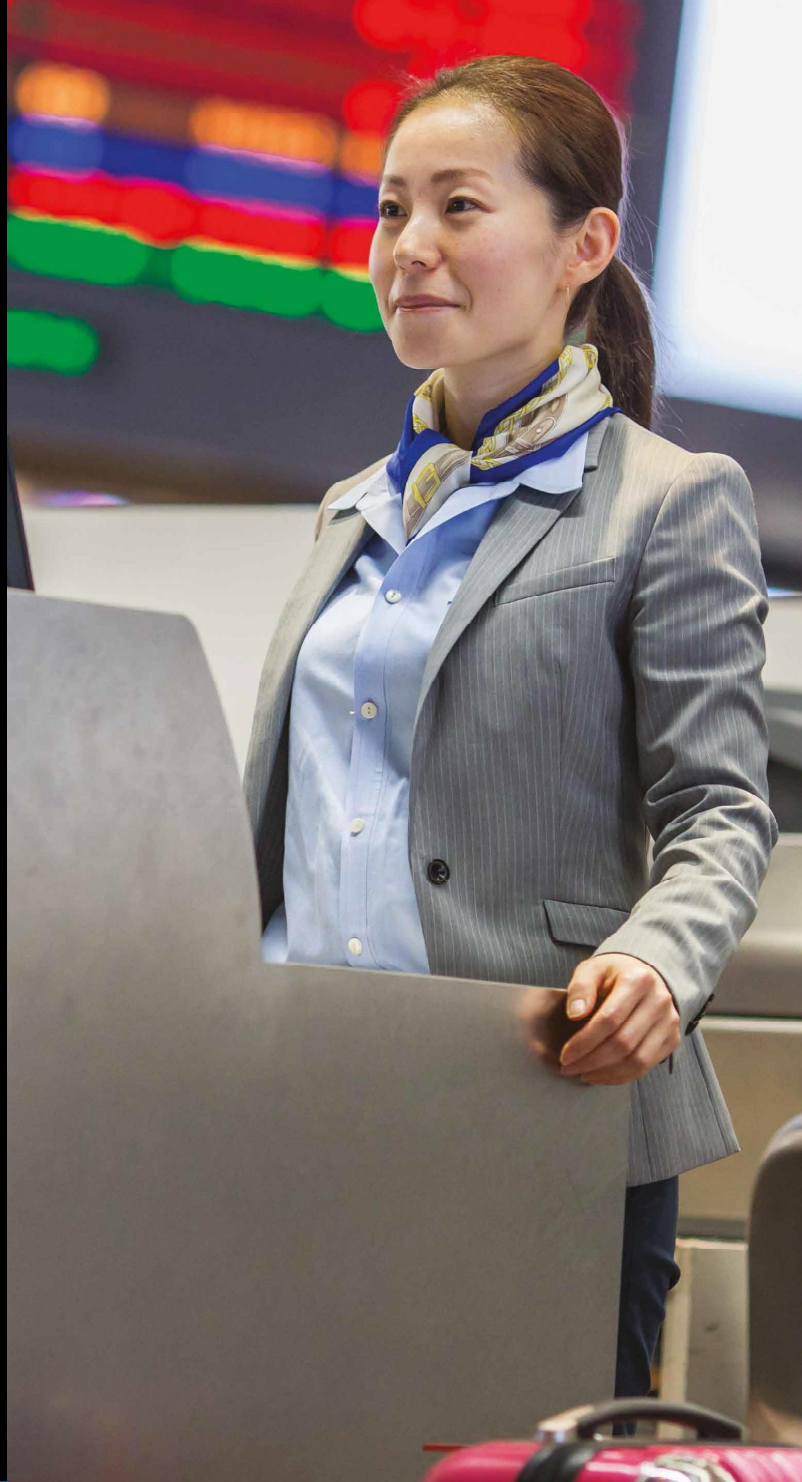
ST7000

SMALL. DISCREET. SOPHISTICATED.



THE COMMUNICATION NEEDS OF EXECUTIVES, CUSTOMER-FACING STAFF AND SENIOR OFFICERS IN OFFICE, AIRPORT, HOTEL AND CASINO ENVIRONMENTS ARE DRIVEN BY STYLE, AS WELL AS FUNCTION

**TO MAINTAIN THE
HIGHEST LEVEL OF
CUSTOMER SERVICE,
THESE PROFESSIONALS
NEED A DEVICE THAT
ALLOWS THEM TO KEEP
THEIR EYES UP AND
THEIR HANDS FREE**



Working closely with our customers, we uncovered their need for a communications tool that delivers a smartphone-like form factor, without the associated distractions. To maintain the highest level of customer service, these professionals need an intuitive, easy-to-use digital radio that delivers high quality audio, blends seamlessly with their image, and whose purpose is increasing productivity, not providing entertainment.



ST7000

SMALL TETRA RADIO



The ST7000 small TETRA radio exceeds these needs with its compact and elegant form, simple user interface and clear audio. With a hybrid internal and external antenna system, the ST7000 is discreet and fits easily in a pocket. The touch sensitive buttons, integrated Bluetooth® 4.0 wireless technology, reversible USB-C connector for charging, and 3.5mm audio connector make the ST7000 a flexible, modern TETRA radio.

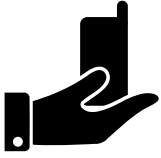
THE ST7000 DELIVERS UNCOMPROMISING AUDIO QUALITY AND COVERAGE IN A SMALL, ELEGANT AND DISCREET FORM FACTOR IDEAL FOR CUSTOMER-FACING STAFF

The ST7000 provides customer-facing staff and senior officers with an effortless communications tool that allows them to increase productivity and keep their focus on what matters most - the customer or the situation and not the device.



FEATURES

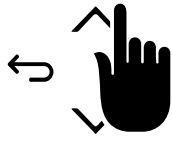
- Small and elegant design
- Simple and intuitive user interface
- Vibrate alert and haptic feedback for discreet use
- White OLED screen with touch UI for easy navigation
- Loud and clear audio
- 3.5 mm audio connector for maximum accessory compatibility
- Reversible USB-C connector for flexible charging and programming
- Enhanced coverage with 1.8W transmit power
- Durable with IP54 and MIL-STD 810 F/G rating
- Long-life battery with up to 20 hours of use
- Integrated Bluetooth 4.0 wireless technology
- GPS and GLONASS for location services



SMALL AND ELEGANT

DISCREET STYLE

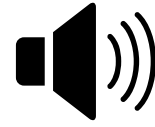
Customer-facing staff can now enjoy the benefit of clear and effective voice communications in a form factor as sophisticated as their professional attire. The ST7000 small TETRA radio provides uncompromising coverage with a hybrid internal and external antenna system, all in a compact, elegant, and discreet design. Small enough to fit in a pocket, the ST7000 practically disappears when worn.



SIMPLE CONTROLS

EASY TO USE

The ST7000 was designed for ease of use by combining the reliability of a two-way radio with the usability of a smartphone. Tactile keys are available for Push-to-Talk, volume, talkgroup and power control; a touch user interface controls the rest of the radio's functions. A simple press of the power key reveals an OLED display and touch zones on the front of the radio. The icons light up when selected, and haptic feedback is provided, simulating the feel and responsiveness of a physical keypad.



LOUD AND CLEAR AUDIO

UNCOMPROMISING QUALITY

The ST7000 delivers uncompromising audio quality and coverage despite its small and elegant form with low distortion, loud audio and 1.8W transmission power. An open speaker port and automatic gain control deliver clear audio against the loudest background noise.



**WITH AN ULTRA-SIMPLE
USER INTERFACE,
THE ST7000 IS AN
EASY-TO-USE
COMMUNICATION TOOL**



**AN IP54 RATING
AND UP TO 20
HOURS OF BATTERY
LIFE ENSURE
THE ST7000 IS
DESIGNED TO LAST**



FLEXIBLE CONNECTIVITY

MAXIMUM ACCESSORY COMPATIBILITY

A 3.5mm audio connector and a reversible USB-C connector for charging provide maximum flexibility in how you listen to and charge your radio. Choose Motorola accessories for guaranteed performance and remote Push-to-Talk, or your own off-the-shelf audio accessories for a full range of options. Charging on-the-go is convenient with the new, reversible, rugged USB-C connector. Integrated Bluetooth 4.0 wireless technology places a wide range of wireless accessories - audio headsets, Push-to-Talk buttons, smart devices, and more - at your disposal, providing greater flexibility and control of the ST7000.



DURABLE

DESIGNED TO LAST

The ST7000's durable design and long-life battery makes it easy to survive daily work-related challenges. It's certified to withstand dust, rain, shock and drops, with an IP54 and MIL-STD 810 F/G rating. With a battery life of up to 20 hours, your focus remains on the job, not the clock.



STYLE AND FUNCTION

The ST7000 small TETRA radio combines an elegant and discreet form, simple user interface and high quality audio.



LED Coverage Indicator

Full Duplex Earpiece

OLED Display

Touch User Interface

Open Speaker Port



3.5mm Audio Jack

USB-C Connector

Microphone



ST7000 ACCESSORIES

Select from a variety of Motorola accessories designed, tested and certified to optimise the performance of your ST7000.

Integrated Bluetooth 4.0 wireless technology and a 3.5mm audio connector enable your ST7000 to work with consumer off-the-shelf audio accessories. However, for guaranteed audio quality, we suggest the use of Motorola certified accessories.



AUDIO ACCESSORIES

The following 3.5 mm earpieces have been tested and certified with the ST7000.

PMLN7540	3.5mm Earbud with Inline Microphone and Push-to-Talk
PMLN7541	3.5mm 2-Wire Earpiece with Translucent Tube

CARRY ACCESSORIES

Our carry accessories keep your hands free so you can concentrate on the task ahead.

PMLN7510	Carry Holster
PMLN7511	Carry Sling
JMZN4020	Wrist Strap, Blue
HLN9767	Wrist Strap, Black



PMLN7510 **PMLN7511**

BATTERIES AND CHARGERS

The Multi-Unit Charger is capable of charging 12 radios simultaneously, and can be equipped with iTM for automatic radio programming.

PMLN4510	Li-Ion 2300 mAh Slim Battery
PS000150A22	Personal Charger, 240VAC EURO Adapter, USB-C connector
PS000150A23	Personal Charger, 240VAC UK Adapter, USB-C connector
PS000150A21	Personal Charger, 240VAC US Adapter, USB-C connector
PMPN4121	12-Device Multi-Unit Charger with EURO plug
PMPN4122	12-Device Multi-Unit Charger with UK plug
PMPN4120	12-Device Multi-Unit Charger with US plug
BR000270A01	Wall Mount bracket for Multi-unit charger
CB000521A01	USB Data Cable 1500 mm for iTM



MULTI-UNIT CHARGER



PERSONAL CHARGER

ANTENNAS

AN000168A01	Antenna 380-430 MHz, 25mm
AN000171A01	Antenna 806-870 MHz, 15mm

MISCELLANEOUS

PMHN4359	Battery Cover
PMKN4196	Radio Programming Cable
HW001104A01	Battery Cover Removal Tool



HW001104A01

BLUETOOTH AUDIO ACCESSORIES

Our exclusive Operations Critical Wireless accessories handle loud environments, while an optional wireless PTT seamlessly links to any accessory. Just put the PTT in a pocket or on a lapel and connect instantly.

* Requires separate power supply - PS000042A12 (EURO) / PS000042A13 (UK) / PS000042A11 (US)

PMLN6463*	Wireless Kit Includes a Receive-only Earpiece, Bluetooth Pod and Charging Cradle (use PTT on radio)
PMLN7181*	Wireless Kit Includes a Swivel Earpiece with Boom Microphone, Bluetooth Pod and Charging Cradle (use PTT on radio)
NNTN8191*	Wireless Bluetooth Push-to-Talk Pod
NTN2572	Earpiece with integrated microphone and 12-inch Cable (requires NNTN8191 PTT Pod)
NNTN8294	Single Wire Earbud with Inline Microphone, 29cm Cord, Black (requires NNTN8191 PTT Pod)
NNTN8295	Single Wire Earbud with Inline Microphone, 114cm Cord, Black (requires NNTN8191 PTT Pod)
NNTN8433*	Completely Discreet Wireless Surveillance Kit Includes: Wireless Neckloop Y Adapter and Retention Hook, Discreet Earpiece Kit and Wireless Push-to-Talk Pod (NNTN8191)



ANTENNA BANDS

Colored bands easily slip on antennas and enable you to quickly identify custom radio user groups.

PMLN7636	Pack of 10 Grey Antenna ID Bands
PMLN7637	Pack of 10 Yellow Antenna ID Bands
PMLN7638	Pack of 10 Red Antenna ID Bands
PMLN7639	Pack of 10 Blue Antenna ID Bands
PMLN7640	Pack of 10 Purple Antenna ID Bands



Antenna ID Bands

ST7000 SPECIFICATIONS



GENERAL

Dimensions H x W x D	107 x 60 x 19mm
Weight Including Battery and Antenna	173g
Battery	Removable 2300 mAh IMPRES Li-Ion
Battery Performance	Duty Cycle 5/5/90 > 20 Hours
	Duty Cycle 5/35/60 > 17 Hours
Audio	Speech Loudness at 30cm: 94 Phon
	Audio Output Power at Rated / Max: 0.9 W
	Audio Distortion at Rated: 1.0 %

RF SPECIFICATIONS

Frequency Bands	380-430 MHz, 800 MHz
Transmitter RF	Power Class 3L (1.8W) & Class 4 (1W)
Receiver Class	A and B
Rx Static Sensitivity (UHF)	UHF: -116dBm (min); -118dBm (typical) 800 MHz: -114dBm (min); -116dBm (typical)
Rx Dynamic Sensitivity	UHF: -107 dBm (min); -109 dBm (typical) 800 MHz: -105 dBm (min); -107 dBm (typical)

ENVIRONMENTAL SPECIFICATIONS

Operating Temperature °C	-20 to +55
Storage Temperature °C	-30 to +85
Humidity	ETS 300-019-1-7 Class 7.3E, MIL STD 810 F, G
Dust and Water Ingress Protection	IP54 (All Connectors are IP67 Rated)
	Dust, Driving Rain Protection
Shock, Drop and Vibration	ETS 300-019 1-7 class 5M3; MIL-STD 810 F/G

MAIN VOICE SERVICES

Full Duplex TMO Private, PABX, PSTN, Emergency
Half Duplex TMO Private, Group, Emergency
Half Duplex DMO Private, Group, Emergency
Inter-MNI, Gateway, Repeater Compatible
PTT Double Push
Adaptive Audio Control (AGC)

Emergency Call Management

Tactical Emergency Group Call to ATTACHED Talkgroup
Non-Tactical Emergency Group Call to DEDICATED Talkgroup
HOT MIC Emergency - Hands Free in Moments That Matter
Emergency Status Msg Sent to Dispatch Console
Preemptive Priority Calls

DMO Repeater and Gateway Services

Works with DMO Repeaters and Gateways*
--

BLUETOOTH AUDIO & DATA SERVICES

Bluetooth Versions Supported	Bluetooth 2.1 +EDR, Bluetooth4.0, Bluetooth Smart (BTLE)
Bluetooth Security	Bluetooth 2.1 Introduces Mandatory Encryption with Secure Simple Pairing (SSP), Easier Pairing and Preventing Sniffing / Hacking Bluetooth 4.0 Supports Security Manager (SM) Services with AES Encryption
Bluetooth Audio	HeadSet Profile, Fast PTT with Motorola Solutions Accessories
Bluetooth Data Services	Serial Port Profile, Dial Up Networking Profile, Discovery Mode, Generic Access Profile, Generic Attributes Profile (GATT), Heart Rate Profile, Battery Service Profile, Devices Info Profile.

LOCATION SERVICES

Constellations Supported	GPS and GLONASS
Simultaneous Satellites	12
	Integrated Internal Antenna
Tracking Sensitivity	-163 dBm
Accuracy	< 5metre (50% probable) @ -130 dBm
Protocols	ETSI LIP, LRRP

ST7000 SPECIFICATIONS

USER INTERFACE

Hard Keys

High Tactility PTT

Power / Wakeup Button

Talkgroup Change Rocker Switch

Volume up / down

2 Configurable One Touch Buttons, Extensive List of Functions

Touch User Interface

Touch sensitive menu icons usable with gloves or in the rain

Simplified user interface

Menu editor, simplify and tailor to user needs

Display

PMOLED 128 x 64 pixels, white

Simplified User Interface

Favourite Talkgroups

Favourite Contacts

Bluetooth

Radio Settings

My Info

Language Options

Advanced User Interface

Talkgroups – TMO Folders, TMO Unique 10,000, TMO Instances 10,000

Talkgroups – DMO Folders, DMO Groups, 2,000

Country/Network Code List - up to 100, by contact or talkgroup

Scan Lists - 40 lists of up to 20 groups

Contacts - up to 1000 with 6 numbers per contact (max 2000 unique numbers)

Fast/Flexible Call Set Up / Answer

Multiple Ring Tones possible

Text & Status Messaging

Status Messages sent from programmable button**

SECURITY OPTIONS

Enhanced Security - OTAR/DMO SCK***

Authentication (Mutual)***

Air Interface Encryption (ETSI / SFPG TEA Algorithms)***

Security Class 1, 2, 3 and 3G support***

End to End Encryption: Motorola CRYPTR micro Hardware Module, FIPS 140-2 Level 3 validated***

BOS Smart Card support***

Permanent Disable (ETSI, V2-Customer Restore)

Temporary Disable (Stun)

DATA & MESSAGING SERVICES

Secondary Control Channel

ETSI and Enhanced AT Commands (including Voice Control and Short Data)

TNP1 - Support simultaneous Packet Data and Short Data Services over PEI

iTM Fleet Management (Remote Programming)

Wi-Fi hardware ready

SERVICE FROM THE START FOR ST7000 ENSURING MAXIMUM PERFORMANCE TO MEET YOUR MISSION CRITICAL REQUIREMENTS

PROVEN PROTECTION

With our proven capability, you can be sure your equipment is expertly repaired and back in the hands of your users quickly. Using the latest tools and with strict adherence to Motorola engineering procedures, our expert technicians diagnose and repair units to original manufacturing specifications.

TECHNICAL EXPERTISE

Experienced technical support engineers work with you to diagnose and resolve hardware and software problems resulting in swift resolution of issues for your end users.

CUSTOMER SERVICE

A single source of support delivered through our state-of-the-art diagnostics equipment, repair tools, and an extensive inventory of replacement parts help us to provide expert repair on your TETRA terminals.

PEACE OF MIND

Our support programme protects your hardware investments from every angle, all designed to optimise device performance, minimise downtime and keep operations running smoothly and within budget.

* Does not work as a DMO repeater.

** SDS messaging, Call-out and Object-call features currently not supported.

*** Expected in 2017

ST7000

SMALL. DISCREET. SOPHISTICATED.



For more information, please visit: www.motorolasolutions.com/ST7000

MOTOROLA, MOTO, MOTOROLA SOLUTIONS and the Stylized M Logo are trademarks or registered trademarks of Motorola Trademark Holdings, LLC and are used under license. All other trademarks are the property of their respective owners. ©2017 Motorola Solutions, Inc. All rights reserved. 01 -2017

